

LAND AUCTION

480± ACRES | KEYA PAHA COUNTY, NE

ONLINE

Bidding Available!

SATURDAY, DECEMBER 14, 2024 AT 2:00 PM CST

Action Location: Naper Cafe, 100 E 2nd Street, Naper, Nebraska

PROPERTY OFFERED IN TRACTS OR IN COMBINATIONS

DRYLAND FARM GROUND | RECREATIONAL PASTURE

Offering Summary

Sale Price:	TBD at Auction
Tract 1:	119± Acres; Pasture
Tract 2:	161± Acres (includes 2.5± acre bin site); Dryland Farm Ground
Tract 3:	160± Acres; Combination of Dryland Farm Ground/Pasture
Tract 4:	40± Acres; Combination of Dryland Farm Ground/Pasture

Online simulcast bidding will be available and will close on Saturday, December 14, 2024 at the end of the live auction.

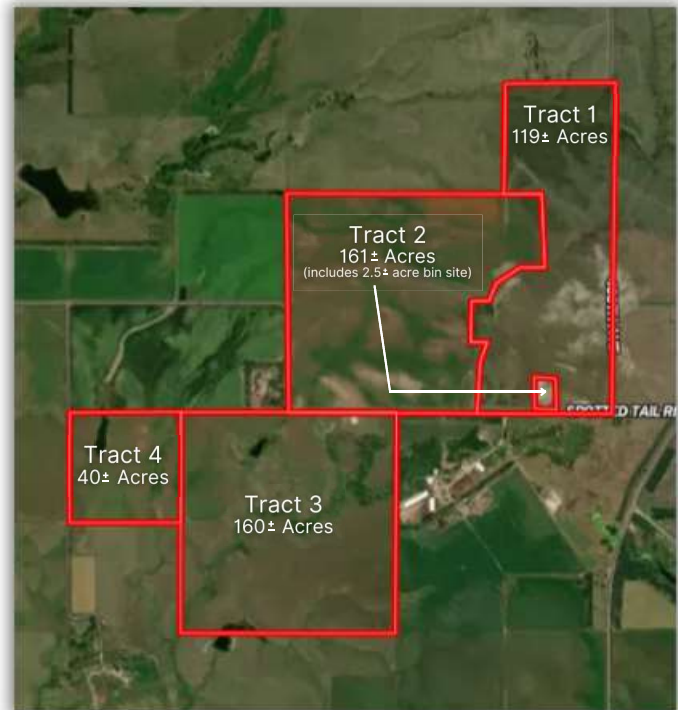
For more information on bidding online, visit our website at www.StrackeRealty.com



For more information, contact:

Kyle Connot
Land Sales Agent
(402) 340-0493

S. Scott Moore
Auctioneer
(402) 677-3004



TERMS AND CONDITIONS OF SALE: \$25,000 deposit per tract due day of sale. Balance upon closing. Closing to occur on or before January 14, 2025. Owner makes no warranties of any kind expressed or implied. All information was derived from sources believed correct but is not guaranteed. All interested parties are encouraged to inspect the property prior to the real estate auction. Buyer shall rely entirely on their own information and inspection of the property. The property is selling subject to Seller's confirmation of sale price. No liability for accuracy, errors, or omissions are assumed by the Seller, real estate or auction company. Announcements made day of sale take precedence over all written material. Possession is upon closing. Any equipment that is part of the property being sold will have a "Bill of Sale" for the benefit of the Buyer. For a full due diligence package, please contact: Kyle Connot with Stracke Land & Realty at 402-340-0493 OR S. Scott Moore with Lee & Associates at 402-677-3004.